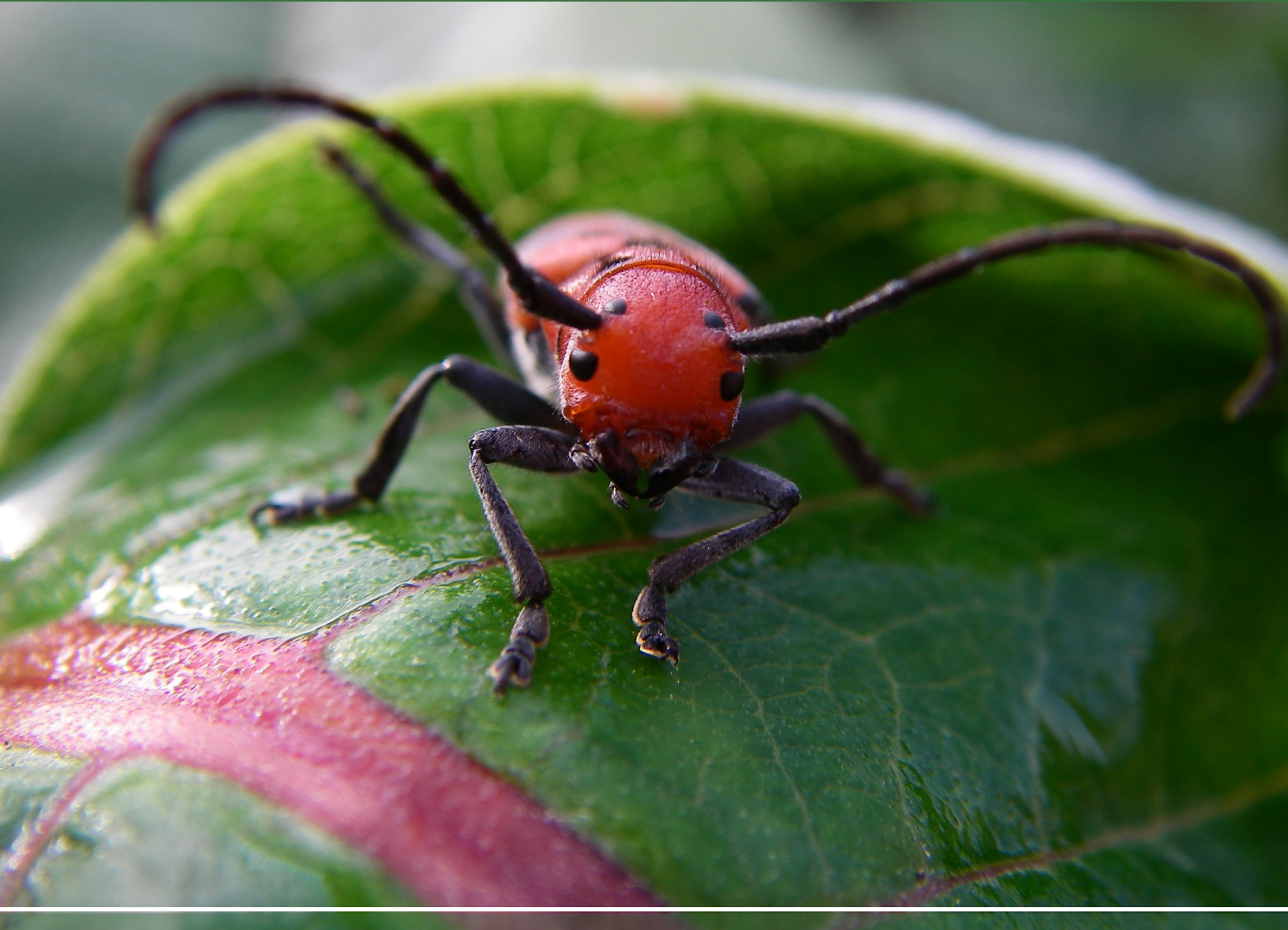




THE WILDERNESS CENTER

# 2022 Spring Programs



Thank you for your interest in our school programs!

Due to the increased need for safety protocols and TWC staffing challenges, we are limiting the field trip options for Spring 2022. TWC's education programs align with the main concepts and specific descriptions within Ohio's learning standards.

We look forward to engaging your students with our full suite of programs again soon.

## Spring 2022 Programs

The following programs can be conducted at The Wilderness Center or at your school. All programs will be held outdoors and are adaptable to any grade level.

### **Beaver Ecology**

Examine pelt, skull, and other artifacts to discover a beaver's adaptations to an aquatic lifestyle. Using a simulation game, students will gather data and analyze the changes in plant and animal communities as a beaver family changes the environment from forest to wetland and back to forest.

### **Schoolyard Exploration**

Explore the outdoors with fun activities that help students become comfortable in the outdoors, practice observation skills, and explore their world.

### **Investigating Insects**

Insects abound! Students collect insects to explore their diversity, observe structures and functions, and compare habitats.

### **A Plot of Plants**

Examine plant types and adaptations and learn how plants grow. Explore the diversity of plants and their impact on the environment.

### **Predator/Prey Relationships**

Explore the behavioral adaptations of predators and prey while playing a version of the Project Wild game "Quick Frozen Critters". By manipulating the game, students will understand how changes in habitat create obstacles and opportunities for these animals.

### **Soils and Soil Conservation**

Discover your local soils, learn about erosion and compaction, look for examples of both, and discuss ways to conserve this important resource.

### **Pond Study (at TWC only)**

The pond is full of macroinvertebrates and other animals adapted for life in the water. Students use nets to collect pond critters and study these adaptations. Older students will discuss the use of aquatic insects to understand water quality.

### **Discovery (at TWC only)**

Discover a special place at The Wilderness Center! This hike will engage students in grade-appropriate observations, including producer consumer, decomposer, habitat requirements, living and non-living, and environmental changes.

## Pricing and Registration

**Program fee:** \$5 per student, per program.  
\$100 minimum per program.

To register for a program at your school or a visit to TWC, please email [programs@wildernesscenter.org](mailto:programs@wildernesscenter.org).

Please provide as much lead time as possible for us to best accommodate your schedule.